

# CULTEC StormGenie™ Automated Drawing Program

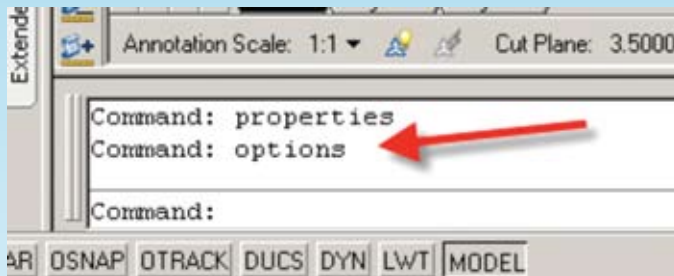
## Configure Your AutoCAD® to be Able to Run the StormGenie™ Application

Usually the installation process will configure AutoCAD® to correctly run the CULTEC StormGenie™ application, but in some instances it is possible that this configuration may not be accomplished. Below are the instructions to check, and if necessary configure your AutoCAD® to be able to run the StormGenie™ application.

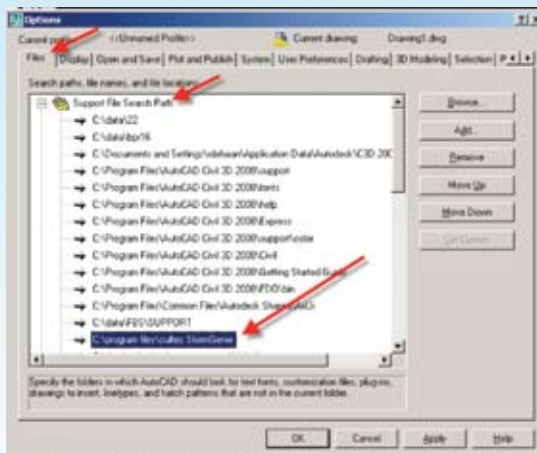
**Step 1:** From the command line in AutoCAD® enter the following: (load "cultec\_stormwater.vlx")

If that command does not load the StormGenie menu proceed to Step 2.

**Step 2:** First Make Sure that the Support Path is Correct

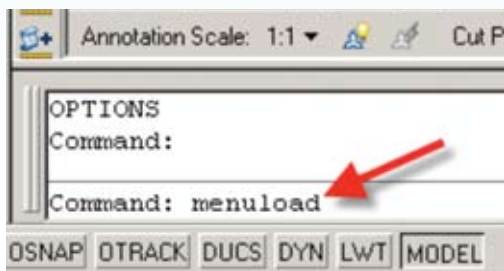


From inside AutoCAD® make sure the C:\program files\CULTEC StormGenie directory is included in your AutoCAD® search and support path. From the command line in AutoCAD® issue the command “options”.



This will bring up the Options window. Select the first “Files” tab and make sure that the directory is in the list of Support File Search Path.

**Next Make sure that the Menu is Loaded**



If the CULTEC StormGenie is not displayed on your menu bar, then from the command line issue the “menuload” command.

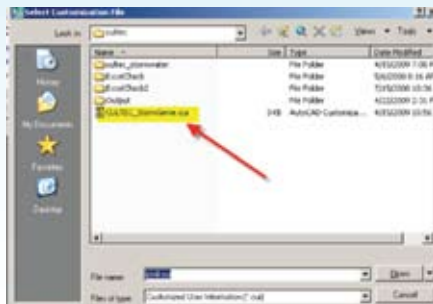
(Continued on back)



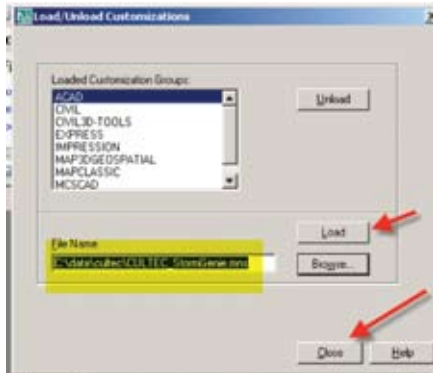
# StormGenie™ Automated Drawing Program



This will bring up the menu window.



Use the browse button to find and select the CULTEC\_StormGenie menu file.



Then hit the load button and after that the close button. Your menu should then be loaded in AutoCAD®.



**CULTEC**  
Chamber of Choice™

**CULTEC, Inc.**

878 Federal Road • P.O. Box 280 • Brookfield, CT 06804  
Phone: 203-775-4416 • Toll Free: 800-4-CULTEC • Fax: 203-775-1462  
Web: [www.cultec.com](http://www.cultec.com) • E-mail: [custservice@cultec.com](mailto:custservice@cultec.com)

Copyright 2009 CULTEC, Inc. All rights reserved.  
STORMGENIE™ is a trade name of CULTEC, Inc. AutoCAD® is a trade name of Autodesk, Inc.