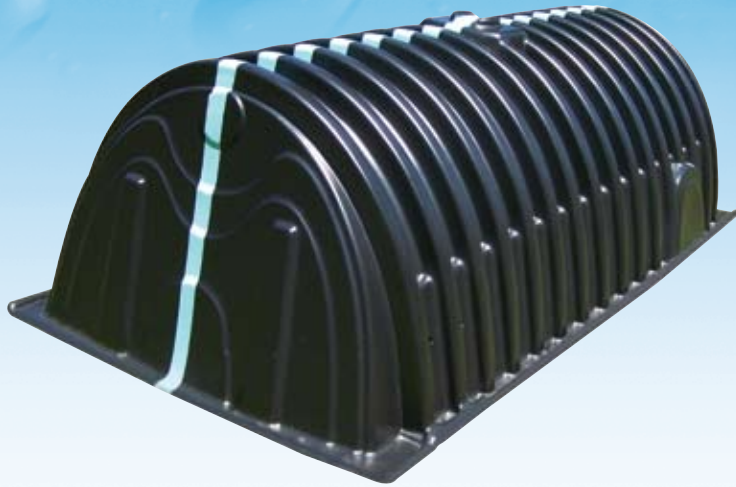


CULTEC Recharger® 330XL

Subsurface Stormwater Retention / Detention Systems



The Recharger® 330XL stormwater chamber has replaced our Recharger® 330 model and features a chamber storage capacity of 52.2 ft³/unit, an increase of more than 12% over the existing design. The added storage capacity has been enabled by extending the length of the chamber.

System design flexibility has been advanced by the inclusion of two side portals on each chamber. The use of these portals allows manifolding of the units to take place at any point within the system, eliminating the need to build a conventional external manifold, thus condensing the system by decreasing the footprint required. The cross-feed capabilities enabled by the chamber's side portals offer a flow capability more than 18" diameter pipe. Each Recharger® 330XL chamber also has the ability to accept up to a 24" diameter pipe into its endwall when greater flow rates need to be introduced.

The individual unit's extended length also offers the benefit of enhanced savings on shipping. By increasing the length of the Recharger 330XL to its maximum shipping dimension, CULTEC is able to transport a 12% larger stormwater system thereby cutting down on freight costs and the number of pieces required per system and also providing lower shipping fees and product costs to the consumer.



Additional System Benefits:

- Unique In-line Manifold System
- Manufactured at ISO 9001:2000 Certified Facilities
- No Separate End Plates
- Single or Double Stacked Systems
- For Non-Traffic or Paved Traffic Installations
- Limited 10-Year Warranty
- Large Storage Capacity in Low Profile
- Residential or Commercial Applications
- Perforated Sidewalls and Full Open Bottom Optimize Infiltration Capability
- Repeating Interior Support Panel
- Quick and Easy Overlapping Rib-Lock Connection
- Corrugated Arch Design for Structural Integrity



