

OFFICE PARKS

West Cummings Park, Woburn, MA

Protecting our water resources and finding improved ways to manage stormwater runoff from impervious surfaces are issues taking center stage in many communities. Increased development interrupts the natural cycle of rainwater seeping into the ground to recharge our water tables.

In Woburn, Massachusetts, a FEMA (Federal Emergency Management Agency) program has made it possible for West Cummings Park, a commercial office complex, to recharge its groundwater through the soil with a CULTEC, Inc. subsurface chamber system. FEMA is looking to partially fund projects that recharge stormwater in local watershed areas; in this case, the Aberjona river watershed outside of Boston.

CULTEC's durable plastic RECHARGER[®] chambers have an open bottom and perforated sidewalls for higher infiltrative capability and a repeating fully formed end wall for superior strength and performance. Mike Pascavage, President of Cummings Properties, a full service commercial real estate development and property management company said the project involved two beds installed under the office complex's parking lot. The complete stormwater management system consists of 176 RECHARGER[®] 330 HD chambers, the HVLV[™] (High Volume, Low Velocity) 180 Header Systems and a CULTEC STORMFILTER[®]. This system provides 11,440 cubic feet of storage volume.

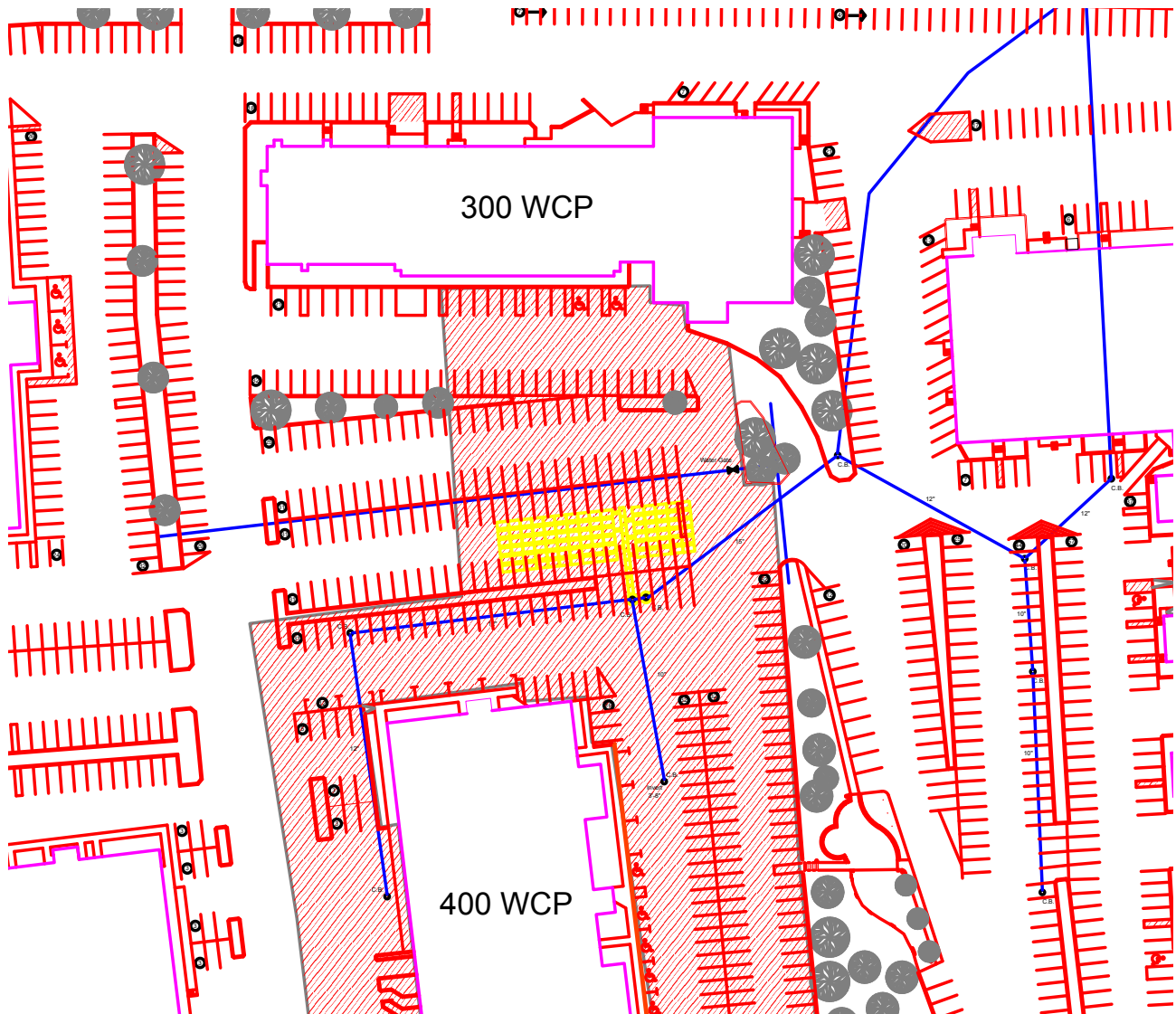
(continued on back)



CASE STUDY

West Cummings Park

CULTEC RECHARGER® chambers are lightweight and have a unique, overlapping rib connection. Pascavage was thrilled with the product and the ease of installation, saying “the site was back to grade in just two days”.



CULTEC 878 Federal Road • PO Box 280 • Brookfield, CT 06804 • 203-775-4416 • 800-4-CULTEC • www.cultec.com

Protected by one or more of the following patents: U.S. Patent No. 5,087,151, U.S. Patent No. 5,419,838, U.S. Patent No. 6,129,482, U.S. Patent No. 6,322,288 B1. Other U.S. and Foreign patents. Other U.S. patents pending. RECHARGER®, CONTACTOR®, HVLV™ and STORMFILTER® are trade names of CULTEC, Inc.

Copyright 2007 CULTEC, Inc. All rights reserved.
CUL073 CULWPC01-07